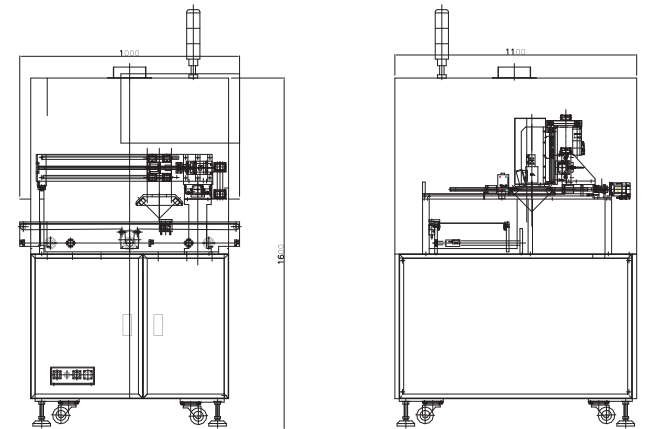
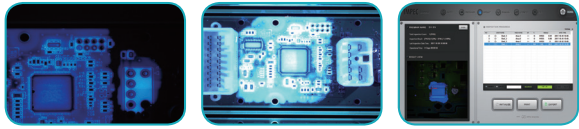


COATING INSPECTION SYSTEM CIS-700 Series



Features

특징

- Provide optimal and efficient coating process through IMPEC's coating line solution (**Coating→Curing→Coating Inspection**)
- Inspection algorithm based on accumulated experience data and know-how in conformal coating industries, over 25 years
- High speed error detection for coating and/or non-coating areas
- Thickness measurement system with Adaptive Hight Control
- Optimized method for making operation recipe of inspection
- User-friendly touch interface and intuitive communication
- Real-time data management for optimal coating line control

옵션

- Thickness Inspection (코팅 두께 측정 기능)
- Bubble Inspection (용액 기포 감지 기능)
- High Viscosity Silicone Inspection (고점도 디스펜싱 검사 기능)
- CIS Remote Control Software (장비 원격 제어 통합 소프트웨어)
- SPC & Smart Factory Communication System (SPC 및 스마트 팩토리 통신 시스템)

CIS-700 Series Specification

INSPECTION SPECIFICATION

Sensor Resolution : 2,448 x 2,048 (5 mega pixel)
 Communication Interface : GigE
 Minimum Detection Size : 0.01~0.03mm
 Inspection Speed : 16.5~100cm²/sec

SOFTWARE FEATURES

Coating Inspection
 Non-coating Inspection
 Barcode Reading & Data Logging
 Error Detection and Display
 User Password Protection
 Error Message Display
 Door Safety Control
 Auto Teaching

SYSTEM DIMENSION

Width : 1,000mm
 Depth : 1,100mm
 Height : 1,600mm
 Weight : Approx. 450kg

PROGRAMMABLE AXIS

Drive Method : AC Servo Motor
 X, Y, and Z axis
 Auto Adjustable Conveyor Width
 Repeatability : ±0.01mm
 Moving Speed : 1,000mm/sec for each axis

PCB HANDLING

Working Area : (X)330mm × (Y)250mm
 PCB Clearance : (Top)75mm, (Bottom)50mm
 Belt Conveyor

UTILITY

Voltage : AC220V, 1Phase 50/60Hz, 2.5kVA
 Air Pressure : 3 bar

CONTROL

IMPEC Coating Inspection Software
 (Graphical Teaching Interface)
 OS : Windows 10
 Monitor : 24" LED Panel
 Storage : 2T HDD