

A & A Global Resources Pvt. Ltd.



RESOURCES

Creating Future Together

A & A GLOBAL RESOURCES PRIVATE LIMITED

327 , 'SIDDHARTH TOWERS', BUILDING NO. 1 S,NO. 12/3B ,
KOTHRUD , PUNE - 411038

M: 91-9325544783 , 91-9325544785

URL : www.ledindia.net

AA-TCM-720 | Specifications

Equipment model:

AA-TCM-720



Product Overview:
Three-knife Cutting Machine

Application: Mainly used in electronic, electrical, lighting, medical, automotive new energy, automotive and other electronic technology industries.

AA-TCM-720 | Specifications

Item	AA-TCM-720
Machine specifications	1200*360*380
Maximum slitting length	Unrestricted
Slitting speed	80, 120, 200, 400mm/s
Power	40W
Tool material	SKD61 high speed steel
Slitting board thickness	0.2-5mm
Machine weight	1.2M - 39KG
Power supply	230V/50Hz (110V/60Hz)

AA-TCM-720 | Application

AA-TCM-720:

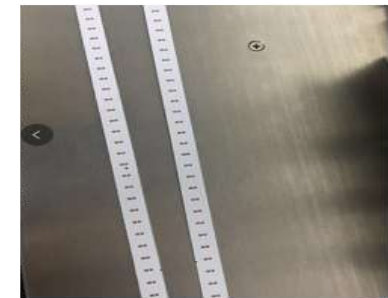
Using a unique cutting method, circuit board cutting is done by six blades, with the top and bottom in one group to form a cutting unit. They are A, B, C, three groups. The entire cutting process is divided into three stages, the A group of blades first cut the board 40%, followed by the B group of blades again from the A blade cut through the slot to run over, again to complete 40% of the cutting volume, and finally by the C group of blades to cut the last 20% and trim the light, due to the small amount of each cut, so the stress generated during the cutting process than the traditional one-time cut-off method to reduce more than 80%. The edges of the cut board are smooth, the board surface is very flat, not twisted and not warped. It is the only machine on the market that can guarantee no deformation of the aluminum substrate after cutting.

A. Mainly used in electronics, electrical appliances, lighting, medical, automotive new energy, automotive and other electronic technology class industries.

01



02



AA-TCM-720 | Operation steps / Comparison

Operation steps:



Ready to start



Turn on the switch

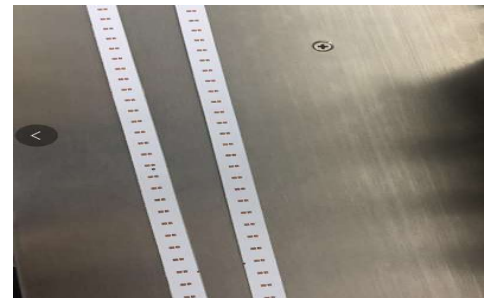
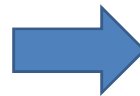


Aligning the V-slot



Automatic board splitting

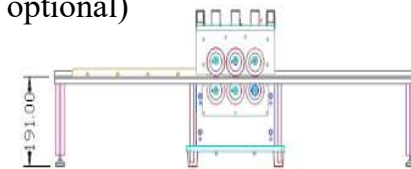
Comparison:



AA-TCM-720 | Product Features

AA-TCM-720

1. Using a unique cutting method, circuit board cutting is completed by six blades, the upper and lower two as a group, forming a cutting unit. Separately, A, B, C, three groups. The entire cutting process is divided into three stages, the A group of blades first cut the circuit board 40%, followed by the B group of blades again from the A blade cut through the slot to run over, again to complete 40% of the cutting volume, and finally by the C group of blades to cut the last 20% and trim the light, due to the small amount of each cut, so the stress generated during the cutting process than the traditional way to cut off more than 80%. The edges of the cut board are smooth, the board surface is very flat, not twisted and not warped. It is the only machine on the market that can guarantee no deformation of the aluminum substrate after cutting.
2. Due to multiple cutting, the cutting process is very smooth, greatly improving the positioning ability of the V-CUT slot, even if the V-CUT slot is very shallow circuit boards, there will be no V-CUT slot from the guide knife jump out of the situation to avoid defective products.
3. All cutting blades are calibrated using an excitation dual-frequency laser interferometer to ensure that the back knife can continue cutting accurately in the slot cut by the front knife. Knife tip runout is not more than 0.02mm, to ensure perfect cutting quality.
4. Can be retrofitted with laser scale positioning function of the stainless steel platform (1.2m or 2.4m optional)



AA-TCM-720 | Product Advantages

A. Cost efficiency

1. "V" groove guide device can be adjusted vertically, faster and more stable to adapt to different thickness of the substrate, increasing the range of use.
2. The cutter can be resharpened and reused several times to reduce the cost.

B. Safety design aspect

1. Both sides of the round knife set are equipped with knife guards to achieve no cutting of hands when feeding materials.
2. The cutting board stroke is below 1-2mm.

C. Stability performance

1. The blade parts are made of SKD61 high-speed steel, wear-resistant, durable and guaranteed for one year.
2. The stainless steel platform with laser scale positioning function can be added (1.2m or 2.4m optional), and there is no limit to the length of the dividing plate.

AA-TC-720 | Product Advantages

A. Cost Savings

The maximum cutting length of the plate: unlimited, the maximum thickness of the plate: 0.2-5mm, the cutting force of the blade is small, and the high-speed steel material imported from Germany is used, the durability of the blade is greatly improved, and the life of the blade can reach more than one year when cutting the aluminum substrate.

It is applicable to a wide range of circuit boards, saving manpower and greatly improving product efficiency.

B. High equipment efficiency

The X and Y axes can be adjusted freely to improve the cutting accuracy to the highest level.

The splitting speed can reach 80, 120, 200 and 400 mm/s.

The upper and lower round knives can be adjusted accurately, with simple operation and fast speed.

C. Guaranteed quality

All cutting blades are calibrated with dual-frequency laser interferometer to ensure that the rear cutter can continue cutting accurately in the groove cut by the front cutter. The tool tip runout is not more than 0.02mm to ensure perfect cutting quality.

AA-TCM-720 | Process Solutions

A

Customer's question: Can the speed of cutting machine be adjusted?

A: Yes, the board speed adjustable 80,120,200,400mm / sec. Depaneling machine adopts a unique multi-consecutive cutting method, circuit board cutting is completed by six blades, the upper and lower two as a group, forming a cutting unit. They are A, B, C, three groups. The entire cutting process is divided into three stages, the A group of blades first cut the board 40%, followed by the B blade again from the A blade cut through the slot, again to complete 40% of the cutting volume, and finally by the C group of blades to cut the last 20% and trim the light, because each time the cutting volume is very small, so the stress generated during the cutting process compared to the traditional way of cutting off more than 80%, divided by a good board edge flat Smooth, the board surface is very flat, not twisted and not warped. Is currently the only walking board type on the market to ensure that after cutting the aluminum substrate does not deform the machine. Can also be customized according to the needs of manufacturers.

B

Customer's question: How many millimetres can be divided by the narrowest board divider?

A: The narrowest board can be less than 3.5MM. If you want to divide the aluminum substrate, it is recommended to use a double-knife holder board divider.

C

Customer question: How many pieces can be divided into each day?

A: The dividing machine can be 12000 to 15000 pieces per day, and the speed is 400 M/S, 8-10 hours.

