

# Automatic Solder Paste Printer

## AA-SPP-X5

A leading domestic printing machine brand that integrates research and development, production, sales, training, after sales service, etc



# Equipment printing accuracy: 0201, QFN, BGA and other precision components.

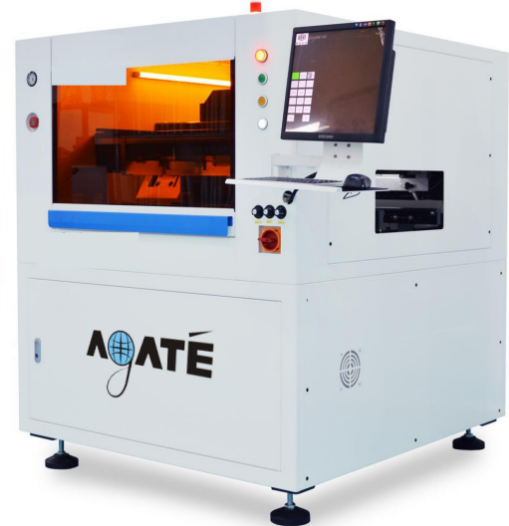
**Smart scraper system**

**Separate cleaning function**

**High efficiency drive control system**

**Automatic positioning system of steel mesh**

**Support 2D detection function**



## Functional characteristics

### Intelligent scraper system

Arch bridge gantry type scraper beam, programmable suspension type scraper head, precision screw automatic lifting control scraper pressure



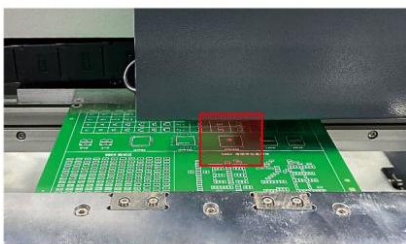
### Independent cleaning system

System with dry cleaning, wet cleaning, vacuum three cleaning methods, can be used in any combination



### Image and optical path system

Using uniform ring light and high brightness coaxial light, equipped with adjustable brightness function, so that each type of MARK point can be well identified, suitable for tinning, gold plating, tin spray, FPC and other types of different colors of PCB



### Dedicated platform correction function

Reliable structure, easy adjustment, with three axis linkage automatic correction function



### Operating interface

Using Windows operating interface, with good man machine dialogue function, do the program file has: operation log/fault self diagnosis/light alarm function, simple operation





## Parameter specification

category	project	technical parameter
Operating interface	operating system	Windows7
	Signal connection	SMEMA link end
visual system	Visual parameters	Up and down double vision, high performance CCD and image processing system
number	Repetitive printing accuracy	$\pm 0.01\text{mm}$
	Printing accuracy	$\pm 0.025\text{mm}$
Cycle Time	Printing cycle	<8s/pcs(excluding printing and cleaning time)
PCB parameter	Steel mesh size	370*370~737*737mm
	weight	800kg
	Mesh frame fixing	cylinder
	PCB measure	Min50x50mm, MAX520x340mm
	PCB thickness	0.4~6mm
	PCB weight	$\leq 3\text{kg}$
	Support mode	Magnetic thimble, magnetic thimble, manual blank holder
	transfer system	One-stage transmission system
	transmission mode	Left-right/right-left/left-left/right-right (software control)
	UVW Platform adjustment range	No less than X: $\pm 3.5\text{mm}$ , Y: $\pm 6.5\text{mm}$ , E: $\pm 2^\circ$
	PCBTransmission height	$900 \pm 20\text{mm}$
	Platform adjustment angle	Z : $\pm 2^\circ$
Platform/ transmission parameters	Scraper speed	10~180mm/secadjustable
	Scraper pressure	0.5~10kg
	Demoulding speed	0~20mm/sadjustable
	Scraper angle	normalized form $60^\circ$
Printing parameters	Net wiping mode/ automatic cleaning	Free combination of dry/wet/vacuum modes
	2D recognition function	Improve and test printing precision.
	software	Lifelong free maintenance and timely upgrade of lifetime free software
	air supply	4~6Kgf/cm <sup>2</sup>
	Main power supply	AC:220 $\pm 10\%$ , 50/60HZ, 2.5KW
Size	L1200*W1320*H1510	