

High speed eight head flying camera pick and place machine with marble worktop

## Upgraded AA-SMT-F864 (Flying Camera)

- ◆ Upgraded shape
- ◆ Weight upgraded to 1.5T
- ◆ Upgraded feeder to 64 bit
- ◆ Bulk components automatic identification
- ◆ Automatic nozzle change
- ◆ Transmission board upgraded/ double screw for width adjustment
- ◆ Upgrade PC host to industrial computer
- ◆ Added Standard Support Plate

*Your partner in SMT Automation since 1993*



# AA-SMT-F864 (Flying Camera)

## Average Mounting Speed 14000-20000CPH

Automatic nozzle change(12-hole nozzle library)

Independent Z-axis simultaneously picking+high speed flying camera

12cm thickness marble worktop+Built-in Keel Steel Structure,Weight 1.5T

Imported TBI high-precision grinding ballscrew + Double Imported TBI high-load linear guideway+Japanese Servo Motor

Dual display in front and rear,double-sided operation

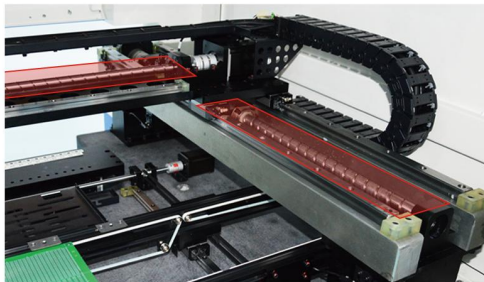
Components library function + support for MES system

Bulk components automatic identification of mounting

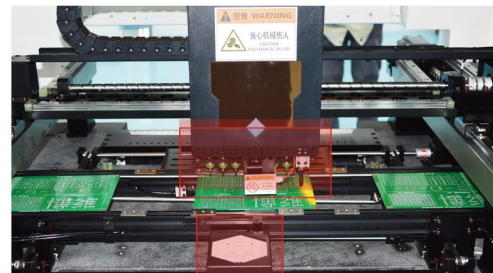


### Advantages **1** High-end accessories are used to ensure the accuracy and stability of the machine at high speed operation

The machine has used imported TBI high-precision grinding ballscrew and double TBI high-load linear guideway. The noise is low when the machine is running at high speed. The machine has long service life and small error.



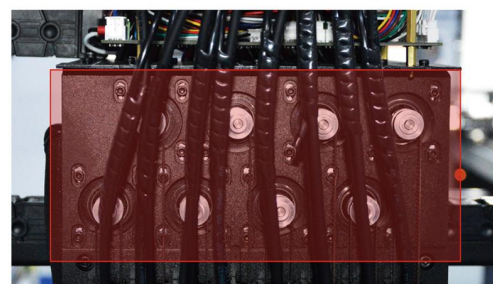
Mark camera and the recognition camera use high-frame rate flying camera with Gigabit network port communication, compared with the traditional USB communication interface, the recognition speed is faster, the accuracy is higher, and high-speed recognition without step loss.



The XY Axis use Japanese servo motors, to control the repeated positioning accuracy error within 0.01mm, it also support mounting 0201 and pin pitch above 0.3mm QFP, BGA and etc.



The "closed-loop" Z Axis motor (8 sets) will not lose step when running at high speed. Each set of motors controls a suction nozzle, which can support various picking ways (8 heads simultaneous picking, 4+4 simultaneous picking, 2+2+2+2 simultaneous picking), it can be programmed according to requirements.



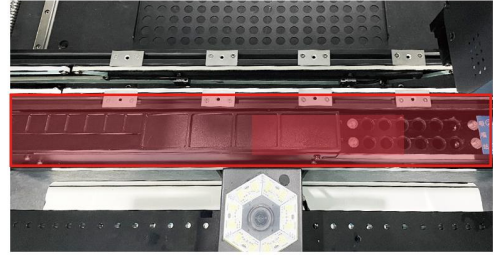


## Advantages ② Compared with other similar model in the same industry, our machine have been upgraded variously, its performance is far better than other machine's

Different from the traditional aluminum worktop, the marble worktop and keel steel structure are used in our machine. It weighs 1500KG and runs at high speed without shaking.



Automatic nozzle replacement function, fast speed, saving labor and time to change the nozzle, new bulk components automatic identification



Dual display in front and rear, double-sided operation



New feeder anti-collision function is added to the machine. The machine will automatically give an alarm and stop after the feeder is cocked, which can prevent safety accidents caused by machine collision, ensure safety in production.

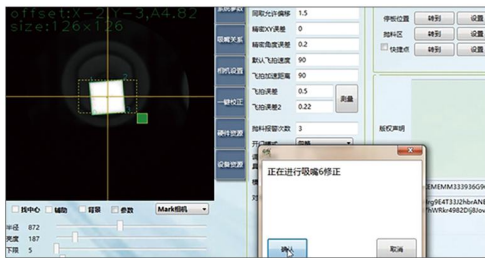


The machine is upgraded with a one-to-one electric feeder interface, can use electric, pneumatic and vibration feeder at the same time.

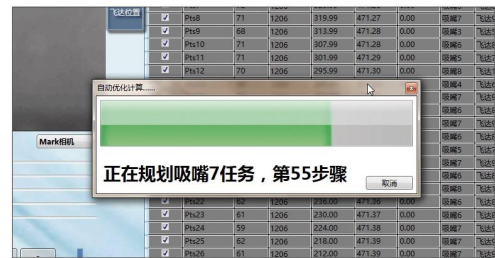


## Advantages ③ Independently developed software, developed a variety of practical functions, and support free unlimited upgrades

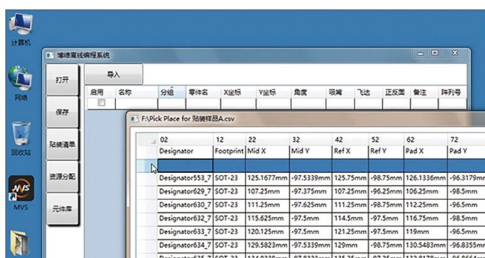
One-click automatic calibration of the nozzle. No manual calibration of the nozzle. So there is less error, the mounting accuracy will be higher.



One-click optimization program (nozzle path), minimizes the picking and placement time



Support multiple programming methods, such as online programming, offline programming and program import, with higher flexibility.



- \* The new component library function saves time and effort in programming
- \* The new MES system can realize the intelligent management of production line output and products through MES system, and improve the execution ability of enterprises.
- \* Display current mounting progress, maximum speed, current speed, attrition rate, transmission board amount, etc
- \* New burn-in test mode, simulated mounting mode, board transmission mode and mounting testing mode
- \* Accuracy automatic correction mode, repeatable positioning, mounting accuracy is guaranteed
- \* New feeder automatic alignment function, feeder mounting head automatic allocation
- \* Optimising MARK point recognition accurately [standard, non-standard automatic measurement].
- \* Bulk components automatic identification
- \* Feeder automatic calibration function



## Parameter

Operation system	win7	Average Power	650W
Software version	Machine-integrated upgradeable software	Average Mounting Speed	14000-20000 pcs/h (Visual)
Feeder No	64 (Support electric, pneumatic feeder)	Compressed Air	0.5-0.6Mpa
Mounting Heads	8	Max. Circuit Board Size	600x380mm
Automatic nozzle change	12-hole nozzle library	Machine Weight(N.W)	1500KG
Bulk Components Tray	1 set (12 Species)	Machine Boundary Dimension(L*W*H)	1395*1330*1376mm
Drive motor	Japanese Servo Motor	Typical Speed	15000pcs/h
XY Max. Movement Range	710x620mm	Nozzle Buffering Range	5mm
Max.Theoretical Mounting Speed	30000 pcs/h (No visual)	Max. Movement Range in Z Axis	38mm
Guideway Adjustment Mode	Manual + Automatic+ lead-screw driving	Operation Window	Dual displays operation front and rear
Motion Drive System	Japanese High-Speed DSP Drive	X/Y Transmission Mode	Imported TBI high-precision grinding ballscrew + Two Sets Imported TBI high-load linear guideway
Z Axis Driving Motor	Eight heads,each head is equipped with an independent Z-axis motor (without step loss)	MARK Camera	Gigabit network port communication+ coaxial light source High speed dynamic recognition of Mark points
Belt Type Feeder	(8-56)mm electric feeder, pneumatic feeder, vibration feeder	Positioning Accuracy	0.01mm
Anti-collision function of feeder	Support	Power Supply	220V, 50Hz
Component Height	0~13mm (Auto adjust, no need change copper sleeve)	XYZ Drive Guideway	Imported TBI high-precision high-load linear guideway
Flying Camera	fast and synchtonous recognition	Board Entering Mode	automatic conveying in three sections from left to right,automatic PCB transfer positioning (Opotional from R to L)
Number of IC Tray	1 SET (10 SPECIES)	Applicable components type	Suitable for 0201,0402,0603, 0805,1206,LED lamp beads, diodes, transistors,SOT, within range 45mm*45mm,P in Pitch ≥ 0.3mm QFP,BGA etc.
Programming Mode	Point-to-point programming, visual programming, PCB file coordinates inputting,etc. Adding off-line programming which greatly improves the programming efficiency, and the software can be humanized design		

